



**BRITETECH**

A Division of Briteforce

# RDU-S 10m

The RDU-S 10m is a rapidly deployable unit designed to provide an autonomous power supply for communication systems in remote locations.

### Standalone Power Supply

The unit operates independently, enabling off-grid deployment.

### Robust Mounting and Signal Coverage

The unit has a 10-meter freestanding wire mast for reliable equipment mounting and optimal signal coverage.

### Remote Monitoring

Remote monitoring capabilities provide real-time tracking and alerts for proactive maintenance.

### Temperature Management

An integrated DC air conditioning system maintains battery temperature for extended lifespan and performance.



### ADDITIONAL FEATURES

- Advanced security and fire system available
- Solar panels on pivoting arms with gas struts
- Quick Diesel generator integration for continuous power
- Sealed access doors protect components, with optional pressurisation to prevent dust ingress.



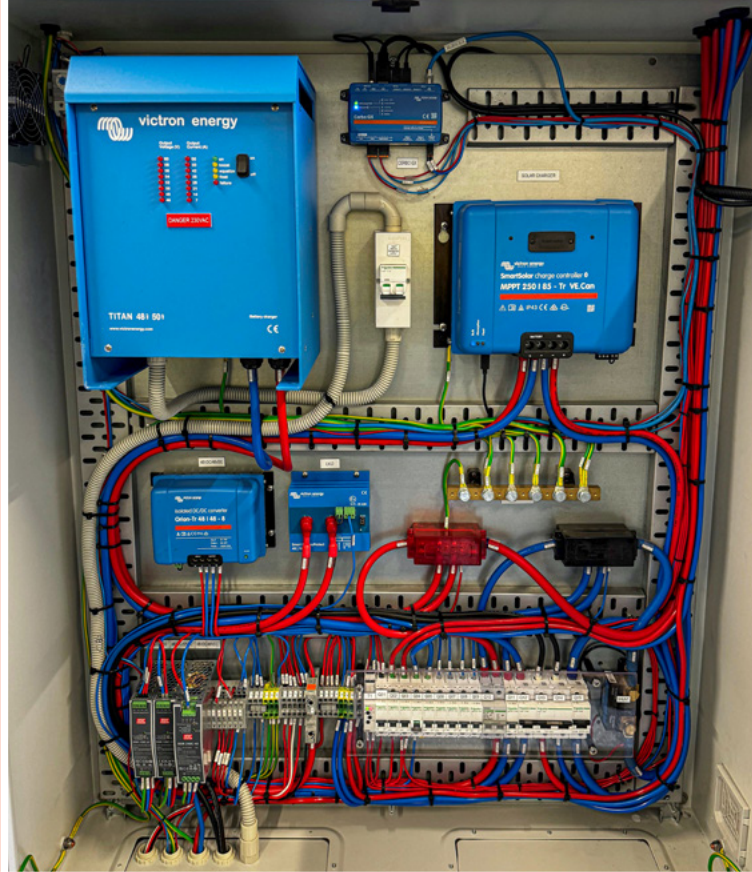
1300 001 576   
britetech.com.au 

# RDU-S 10m

## PRODUCT DATASHEET

### DESCRIPTION

<b>Dimensions (Skid   Shelter)</b>	H:3400mm W:3150mm L:6550mm   H:2800mm W:3050mm L:3150mm
<b>Weight</b>	Transport: 17,000kg approx.
<b>Wall Construction Material</b>	Coolroom panel or HDG steel framed wall clad with Lysaght Panelrib®XRW
<b>External &amp; Internal Finish</b>	Colorbond® "Surfmist"
<b>Flooring</b>	Solid concrete with Class R9 minimum, heavy duty vinyl floor covering (AS 4586)
<b>Roof</b>	Skillion type with Colorbond® flashing and rain canopy
<b>Air Conditioning</b>	48VDC split system aircon
<b>Access Door</b>	1x personal access entry door with stainless steel door hardware
<b>Communication Rack</b>	1x 42RU 600x800mm Rittal TS-IT cabinet
<b>Battery Rack</b>	1x 42RU 600x800mm Rittal TS-IT cabinet
<b>Installed Solar Array   Angle</b>	8x 450W bifacial modules   Fixed (20-45 degrees)
<b>Solar Regulator</b>	Victron MPPT 250/85
<b>Battery   Equipment Voltage</b>	51.2V DC   12V, 24V, 48V
<b>Battery Capacity</b>	Up to 16x 78Ah Lithium Ferro Phosphate (LiFePO4)
<b>Battery Autonomy</b>	Typically, 3-5 days depending on average load
<b>Battery Design Life</b>	10 years
<b>Remote Communication</b>	Victron VRM
<b>Fire Detection &amp; Protection</b>	Basic: 2x photo-optical detectors integrated with Victron Cerbo GX. Advanced: Notifier AFP-3030 or FS-1600. Fire suppression available on request.
<b>Standards Compliance</b>	AS3084, AS3000, AS3008, AS3015, AS1170, AS3600, AS4100, AS/CA S009.



**BRITETECH**

A Division of Briteforce

📞 1300 001 576

💻 [britetech.com.au](http://britetech.com.au)

3a Meliador Way, Midvale WA 6056

✉ [sales@britetech.com.au](mailto:sales@britetech.com.au)

In association with

**ART**